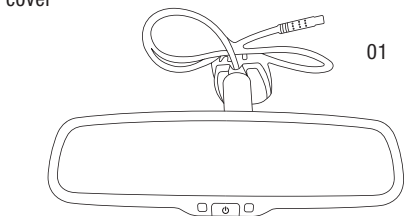


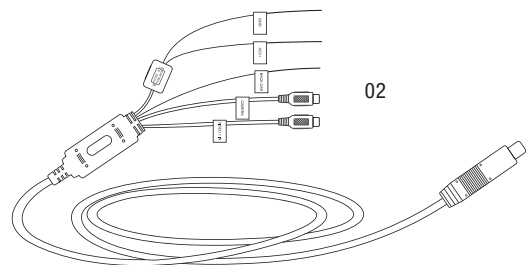
## 01 PACKAGE

The packing box contains the following accessories, please confirm:

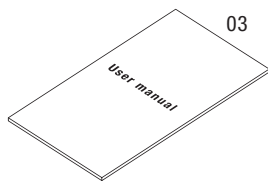
- 01 Rearview mirror monitor
- 02 wire harness
- 03 User's manual
- 04 wire cover



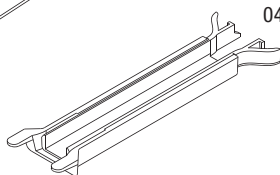
01



02



03



04

For the items listed above, please check with your package box. If any damage, Please contact with the distributor or the agent as soon as possible.

## 02 FEATURES

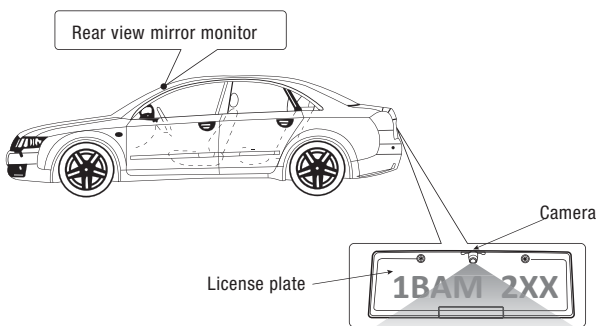
- Back up camera display
- Car dvd GPS or other video signal input
- Automatic brightness adjustment
- 4.0 mm glass and car factory OEM bracket
- Compass and temperature (option)
- Parking sensor (option)

## 03 SPECIFICATIONS

- Back up camera display (auto switch)
- Car dvd GPS or other video signal input
- 2ways Video Input
- Signal System: PAL / Auto / NTSC
- Screen Size: 4.3 inch
- Display Screen: TFT-LCD
- Aspect Resolution: 480(H) X 272(V)
- Working Voltage: DC 12V

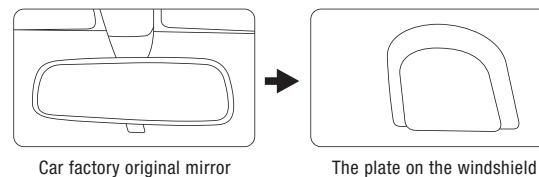
## 04 HOW TO INSTALL REVERSE CAMERA

When a camera needs to be installed at the rear of vehicle, a good position is usually at the top of the License plate where there is an under ledge.



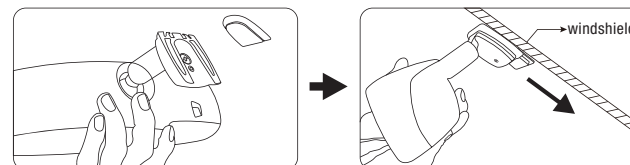
## 05 HOW TO INSTALL MIRROR MONITOR

### Remove the original mirror



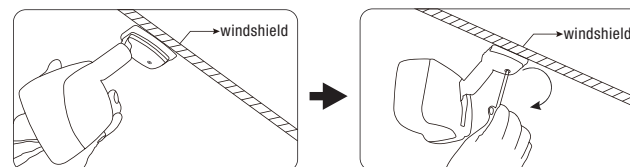
Different cars have different brackets. It depends on your vehicle maker and manufacturer. There are many methods to remove the original rear view mirror, however, please don't force the mirror off the bracket. The manufacturer will not be responsible for damage caused to your car by wrong installation of the mirror.

### Install mirror monitor on the plate



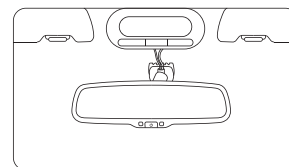
Take down your original mirror, and make the mirror monitor ready

Install rear view mirror along this direction



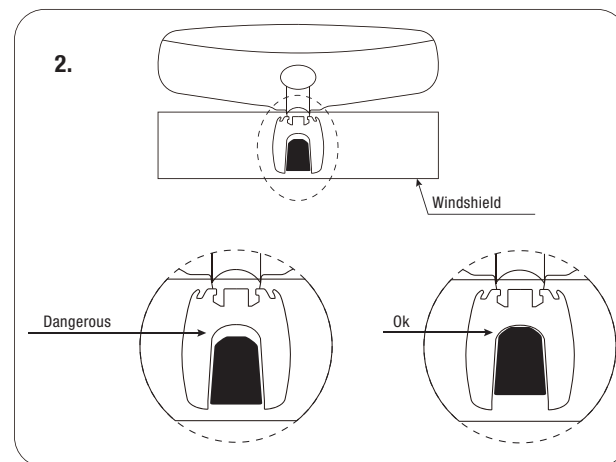
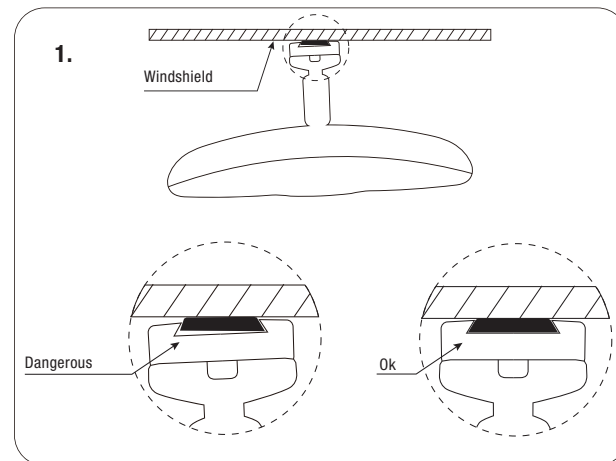
Please make sure to install the mirror to the end of the bottom without any loose

Contrarotate the fixed rear view mirror  
Torque is about 0.8-1.3 N.m

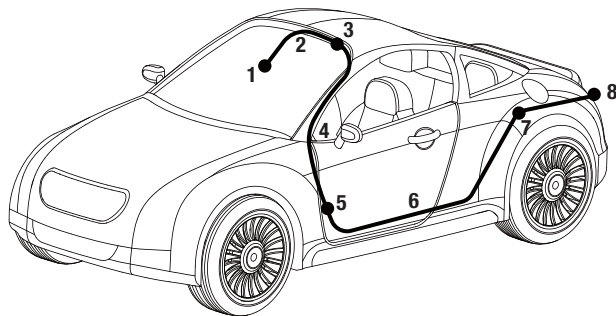
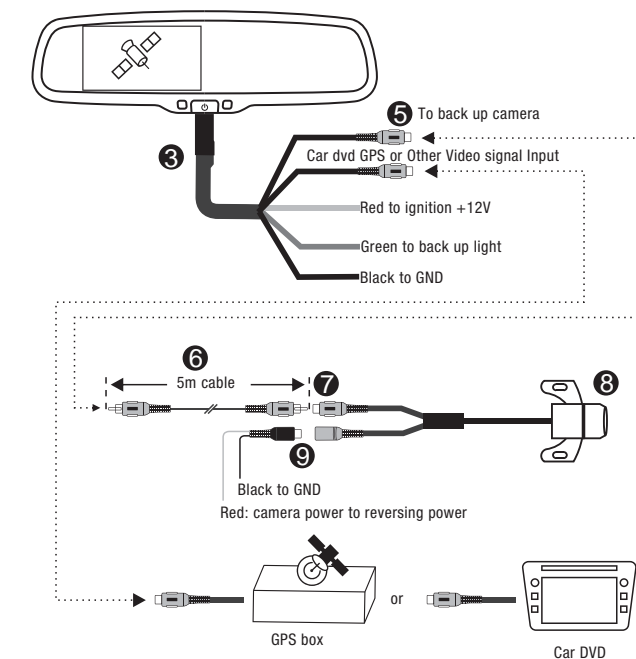


**NOTE:** Always use caution, DO NOT force the mount. We will not be responsible for broken windshields. If you are not sure how to remove or re-install the mirror seek trained, qualified help.

### CAUTION!

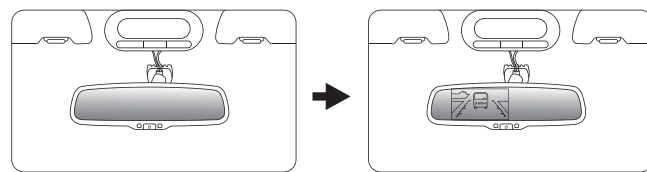


## 06 HOW TO WIRE



## 07 BACK UP CAMERA DISPLAY

When the car is in reverse, the monitor will automatically display back up camera.



## 08 AUTOMATIC BRIGHTNESS ADJUSTMENT

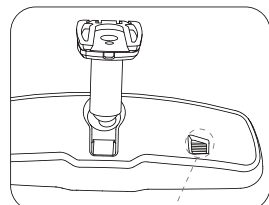
The brightness of screen varies with ambient light, thereby, to make driver get a clear and comfortable image when reversing.

**WEAK LIGHT** When ambient light is weak, the screen will automatically reduce the brightness and get better vision.

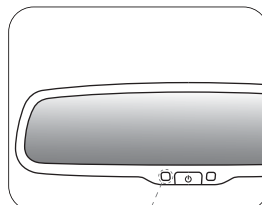
**STRONG LIGHT** When ambient light is strong, the screen will automatically increase the brightness and get better vision.

## 09 AUTO-DIMMING (OPTION)

Auto-dimming rear-view mirrors increase driving safety by eliminating glare that can impair vision. In auto-dimming technology, a forward-looking sensor detects low ambient light from headlights behind the car and directs the rear-view sensor to look for glare. The mirrors darken automatically in proportion to how bright the glare is, then clear once the glare is no longer detected.



the light sensor from the back of mirror detects the ambient light



front light sensor detects the light from rearward-approaching vehicles.

	Video input: short press to turn on/off auto-dimming long press to turn on/off the screen.
The button	Camera input: adjust brightness of screen

This device complies with Part 15 of the FCC Rules. Operation is subject to the following two conditions:

- (1) this device may not cause harmful interference,
- (2) this device must accept any interference received, including interference that may cause undesired operation. changes or modifications not expressly approved by the party responsible for compliance could avoid the user's authority to operate the equipment.

**NOTE:** This equipment has been tested and found to comply with the limits for a Class B digital device, pursuant to Part 15 of the FCC Rules. These limits are designed to provide reasonable protection against harmful interference in a residential installation. This equipment generates, uses and can radiate radio frequency energy and, if not installed and used in accordance with the instructions, may cause harmful interference to radio communications. However, there is no guarantee that interference will not occur in a particular installation.

If this equipment does cause harmful interference to radio or television reception, which can be determined by turning the equipment off and on, the user is encouraged to try to correct the interference by one or more of the following measures:

- Reorient or relocate the receiving antenna.
- Increase the separation between the equipment and receiver.
- Connect the equipment into an outlet on a circuit different from that to which the receiver is connected.
- Consult the dealer or an experienced radio/TV technician for help.

To maintain compliance with FCC's RF Exposure guidelines, This equipment should be installed and operated with minimum distance between 20cm the radiator your body: Use only the supplied antenna.



**No entertainment video is permit when driving except the demo for navigation and backup camera display!**

**\*This manual is only for your reference, please check the actual product as the standard!**

# Ultra High Brightness Mirror Style Monitor

## USER MANUAL

AK2-043LA