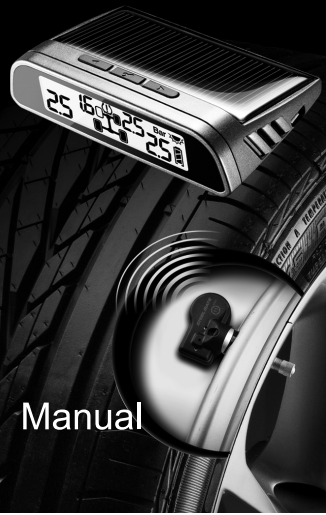
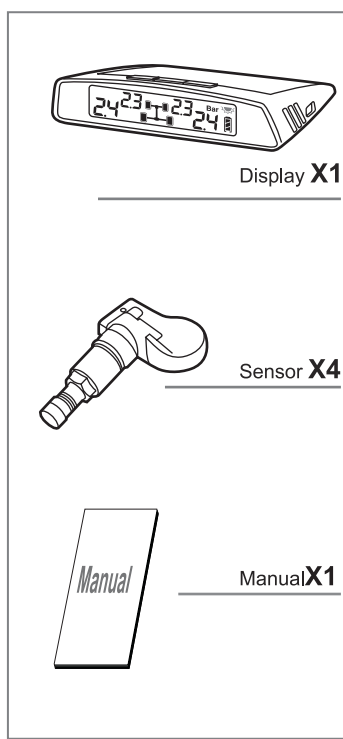


TPMS
Tire Pressure Monitoring System
Solar Powered TPMS
TP-S3I

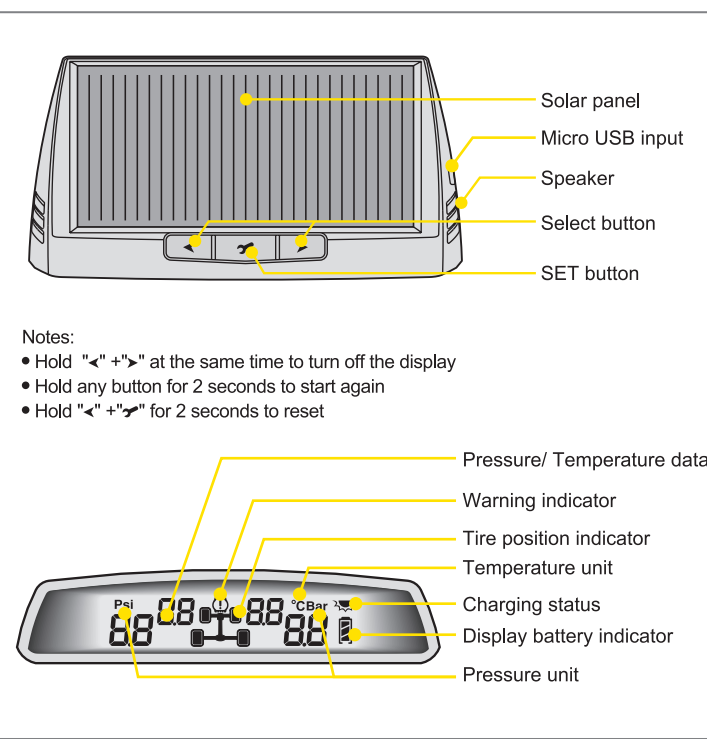


Manual

Includes

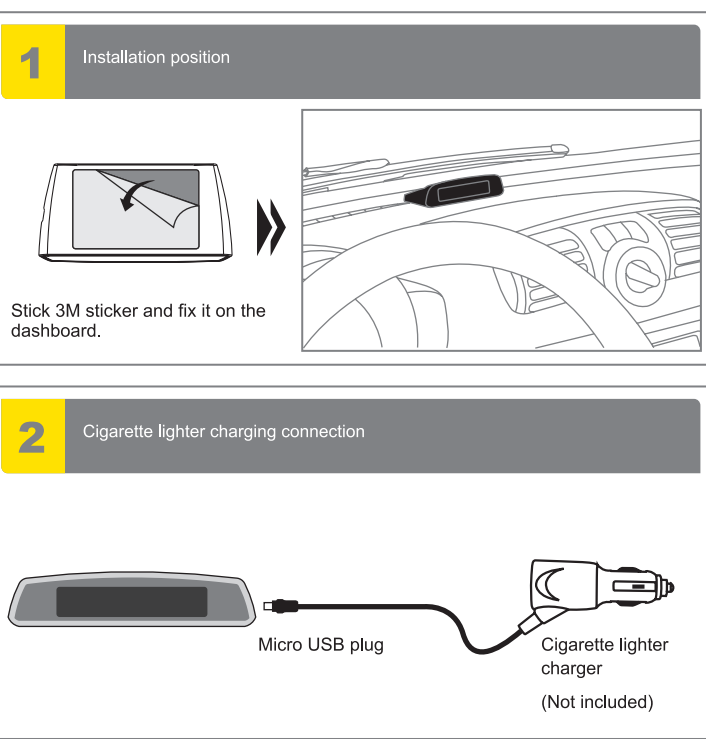


Brief look

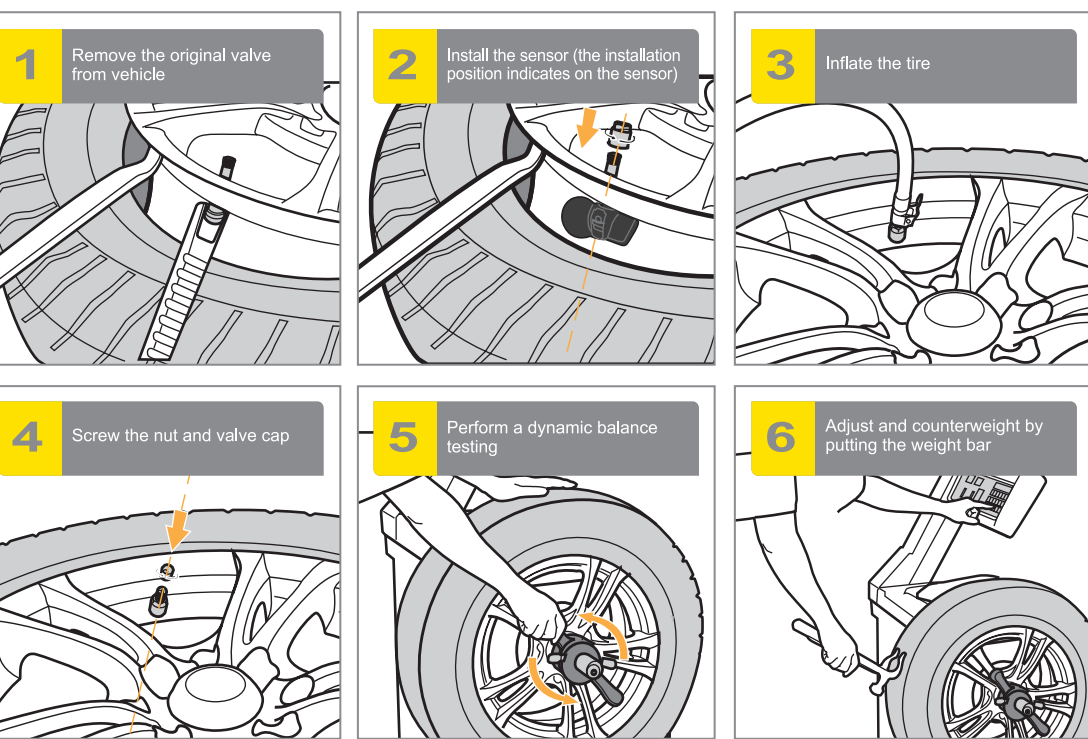


Notes:
 • Hold "←" + "→" at the same time to turn off the display
 • Hold any button for 2 seconds to start again
 • Hold "←" + "→" for 2 seconds to reset

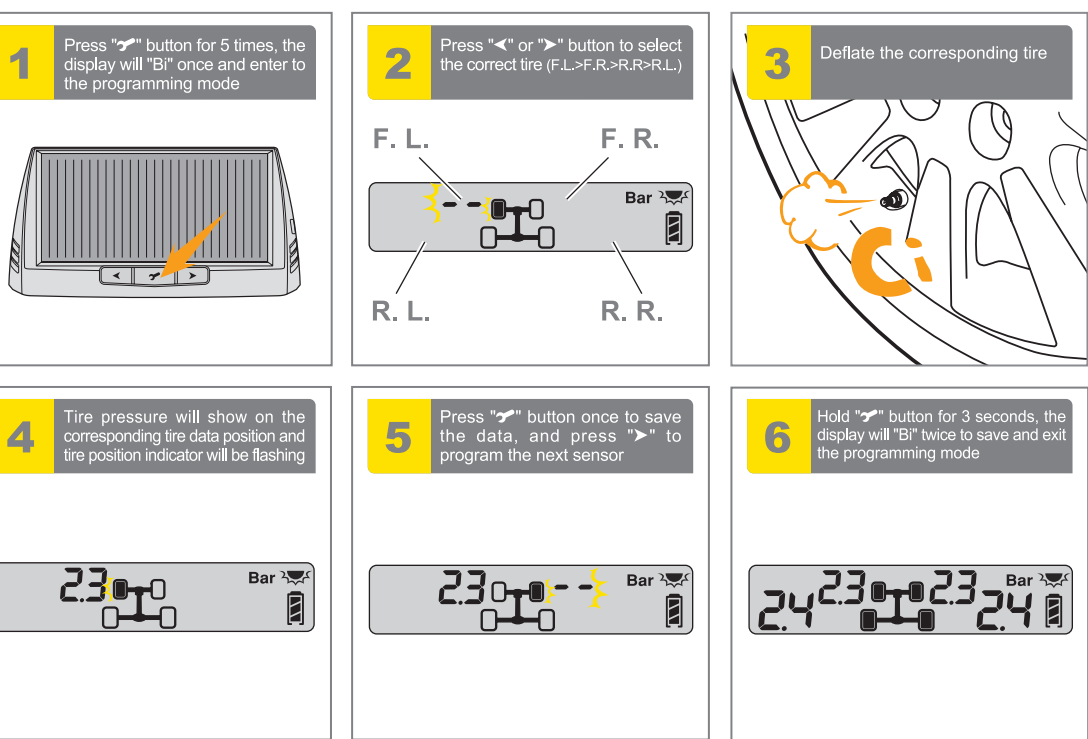
Display installation



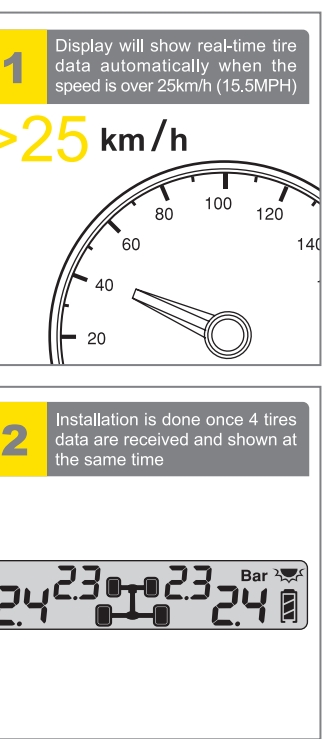
Sensor installation



Sensor programming (Reminder: All sensors are pre-programmed)



Functional test after installation



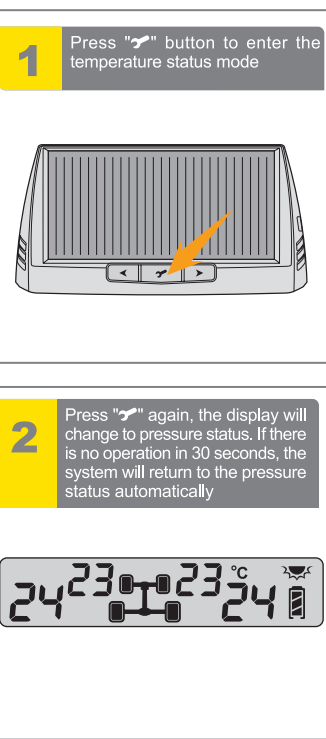
Think safety think Steelmate

©Steelmate Co., Ltd. All rights reserved. The trademark, patent and copyright are owned by SteelmateCo., Ltd. The right to change the design and specifications reserved.

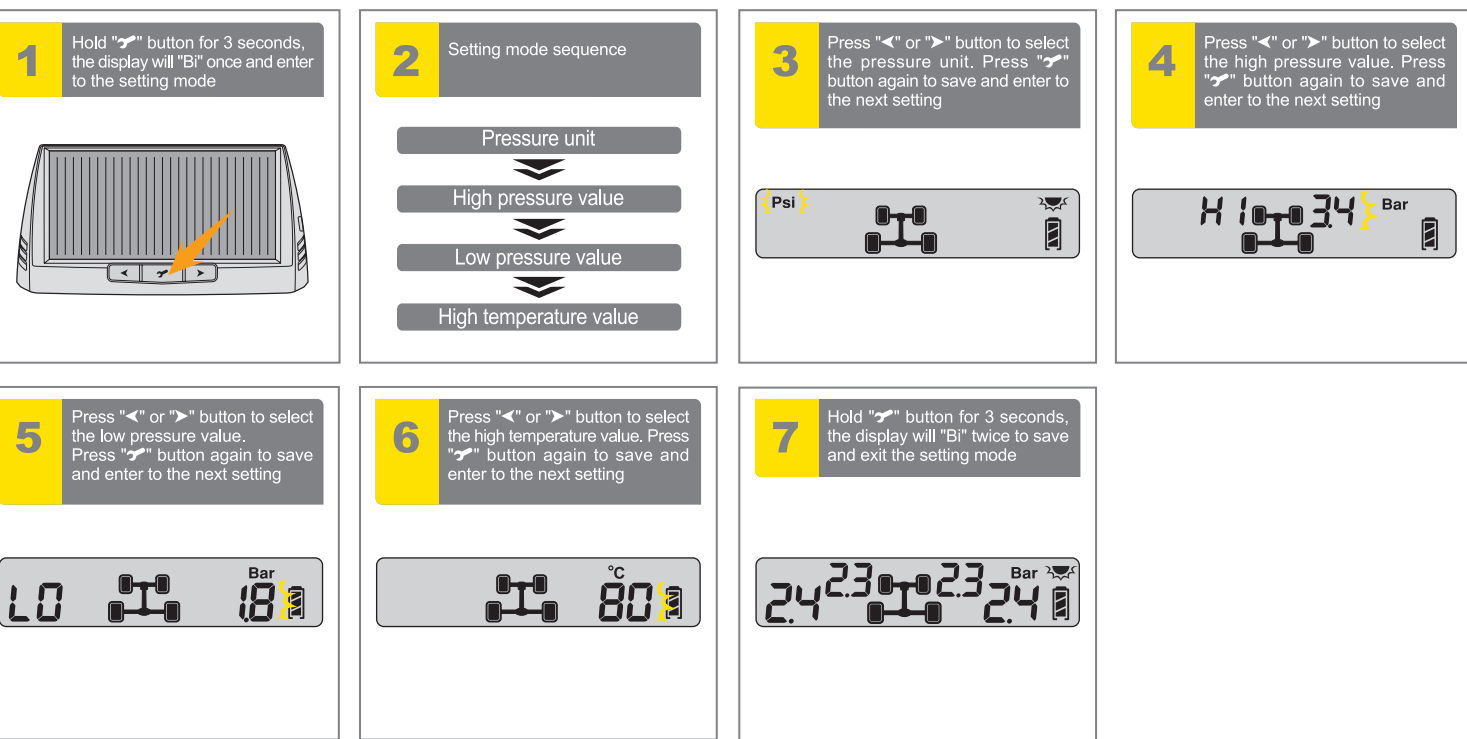
Different scenarios



Temperature checking



Parameter setting



Specifications

Sensor:
 Operating frequency: 433.92±0.05MHz
 Operating voltage: 2.0~3.6V
 Operating temperature: -20°C~+105°C/
 -40°F~+221°F
 Pressure range: 0~8Bar/0~116PSI

Display:
 Operating frequency: 433.92±0.05MHz
 Operating voltage: 2.6~3.6V
 Operating current: <2mA
 Static current: <100uA
 USB charging current: <60mA
 Operating temperature: -20°C~+70°C/
 -4°F~+158°F
 Solar charging current: >15mA (at 5500L
 25°C)
 Charging temperature: -10°C~+65°C/
 +14°F~+149°F
 Built-in battery capacity: 3.2V/160mA
 (* Maximum display tire pressure is 99PSI)

Alarm value:
 Adjustable high pressure: 2.9~5.0Bar/
 42~73PSI
 Adjustable low pressure: 1.7~3.4Bar/
 25~49PSI
 Adjustable high temperature: 50~90°C/
 122~194°F

Disclaimer

• Tire Pressure Monitoring System (TPMS) is designed for monitoring tire irregularities. Driver has responsibility to maintain tires regularly
 • Driver should react promptly once warning from this unit alerted
 • Steelmate does not guarantee or assume liability for the loss of sensors

Default value:
 High pressure value: 3.3 Bar/48PSI
 Low pressure value: 1.8 Bar/26PSI
 High temperature: 80°C/176°F

Precision:
 Pressure: ±0.1Bar/±2PSI
 Temperature: ±3°C/±5°F

Air pressure unit:
 1 Bar = 14.5 PSI = 100K Pa = 1.02 Kg/cm²

Notes

1.This system is for different vehicles with tire pressure within 5.0Bar/ 70PSI.
 2.All sensors in this unit have been pre-set individually for each tire in the factory.
 3.Whenever the location of tire changed, the sensors must be changed to the corresponding tire.
 4.The display will turn off after the vehicle flames out.
 5.The sensor battery life depends on the driving mileage.
 6.The approval mark and numbers which should be kept permanently, will not affect its installation and functions.
 7.If the solar energy display is placed in temperature of higher than 70°C(or 158°F), the capacity of the built-in battery might be damaged.
 8.Display is not charging or the case of the display expanded means the built-in battery is damaged.
 9.Discharge and charge fully every 6 months to preserve battery life.
 10.Store between -20°C to +70°C (-4°F to +158°F). Charge between -10°C to +65°C (+14°F to +149°F).
 11.Do not expose the battery to high temperature or direct flame.
 12.Do not get battery wet or store in high humidity, otherwise short circuit will happen.
 13.Do not disassemble or tamper with battery.

Troubleshooting

1. After the installation, there is no tire data on the display
 • The sensors were not programmed to the display, please reprogram the sensors
 • The display should show the real time tire data automatically when the speed is over 25km/h

2. There is no tire data on the display while ACC properly
 • The sensors are not programmed to the display, please reprogram it
 • There is a problem with the sensor

3. The system has a problem when there is "-" appeared occasionally
 The signal that is transmitted is a RF signal and is much like a cellphone signal. The FCC requires to allow all other RF signals to interfere with the system signals and this can cause the monitor to occasionally miss a transmission from the sensors. If this persists then you could have a damaged sensor or the batteries could be weak.

*14. Tighten the nut slowly with 4.0N·m (±0.5) torque in one rotation to avoid damaging the sensor.

FCC warning statement

This equipment has been tested and found to comply with the limits for a Class B digital device, pursuant to Part 15 of the FCC Rules. These limits are designed to provide reasonable protection against harmful interference in a residential installation. This equipment generates, uses and can radiate radio frequency energy and, if not installed and used in accordance with the instructions, may cause harmful interference to radio communications. However, there is no guarantee that interference will not occur in a particular installation. If this equipment does cause harmful interference to radio or television reception, which can be determined by turning the equipment off and on, the user is encouraged to try to correct the interference by one or more of the following measures: Reorient or relocate the receiving antenna. Increase the separation between the equipment and receiver. Connect the equipment into an outlet on a circuit different from that to which the receiver is connected. Consult the dealer or an experienced radio / TV technician for help.